

CATALOGUE  
2026



09 580 3100 / [WWW.OWTNZ.COM](http://WWW.OWTNZ.COM)

# OWT PRODUCT CATALOGUE



20  
26

Leading providers of window opening gear and natural ventilation technology.



# TABLE OF CONTENTS

|  |             |
|--|-------------|
| 1. General Information .....                           | <u>p.03</u> |
| 2. High Profile Projects .....                         | <u>p.04</u> |
| 3. Manual Shaft & Lever Gearing .....                  | <u>p.05</u> |
| 4. Electric Shaft & Lever Gearing .....                | <u>p.07</u> |
| 5. Electric Chain Drives .....                         | <u>p.09</u> |
| 6. TOPP C20 Chain Drives .....                         | <u>p.11</u> |
| 7. ACK4 Chain Drives .....                             | <u>p.13</u> |
| 8. KATO Chain Drives .....                             | <u>p.15</u> |
| 9. HM-C35C Chain Drives .....                          | <u>p.17</u> |
| 10. HM-C40 Series Chain Drives .....                   | <u>p.20</u> |
| 11. Liwin L35 & L40 Chain Drives .....                 | <u>p.23</u> |
| 12. Yale Aeron Electric Chain Drives .....             | <u>p.26</u> |
| 13. AXA Remote 2.0 Battery Operated Chain Winder ..... | <u>p.28</u> |



# General Information

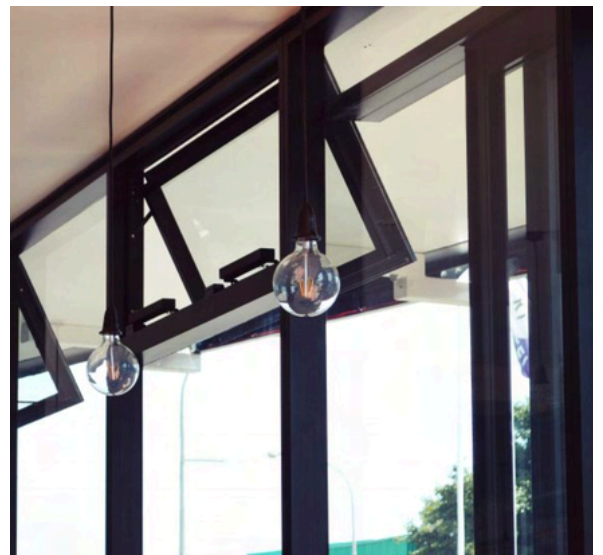
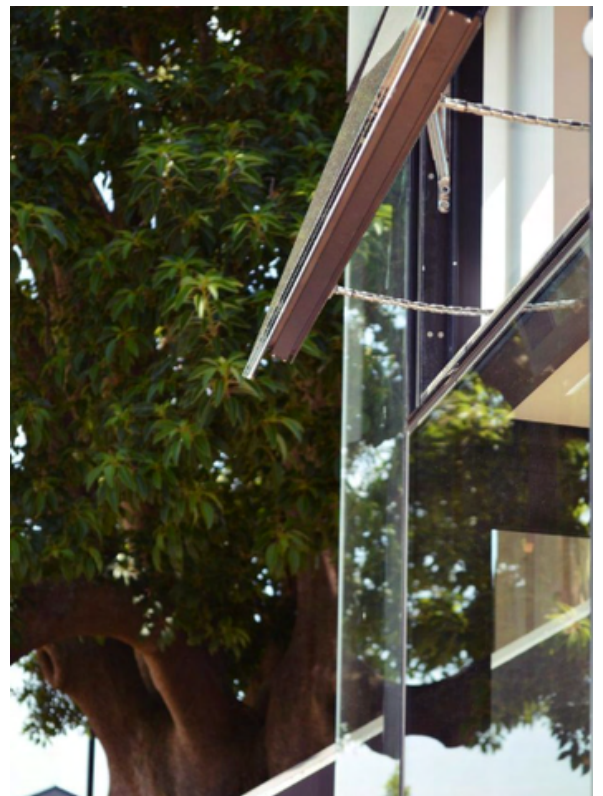
Operable Window Technologies is a New Zealand based company that has been located in Auckland since 2011.

We supply and install high-level window opening mechanisms, ranging from straightforward manual or electric shaft and lever mechanisms to sleek, discreet chain drive actuators. We are also able to fully integrate smoke, BMS, and ventilation systems.

We have considerable experience in this field and have completed many successful installations - particularly within the sectors of education, community, aged care, commercial and residential.

Operable Window Technologies have worked on a number of notable projects in the last 15+ years. Other sectors for which we have completed installations include churches, hospitals and recreation centres.

Our depth of experience allows us to collaborate closely with our clients to identify the most effective solution - one that balances function, aesthetics, budget and timelines.



# High-Profile Projects You Might Recognise

Delivering robust, automated window gearing - from manual or electric shaft and lever to chain drives - across schools, hospitals and public buildings. OWT brings decades of expertise, ensuring seamless integration, aesthetic integrity, and on-time delivery.



## ACG Tauranga - Electric Shaft & Lever Gearing

This project involved installing electric shaft and lever gearing inside a brand new multipurpose sports facility for ACG Tauranga.



## Papamoa College - Manual Shaft & Lever Gearing

For this project, we installed manual shaft and lever gearing to operate high-level awning windows at Papamoa College.



## Hobson Hotel - Chain Drives

For this project, we installed 24v Window Master chain drives to high-level and low-level awning sashes of Governors Café.



# Manual Shaft and Lever Gearing

OWT supply and install manual shaft and lever window control gearing. This is the most robust and reliable manual window control option, having been tried and proven over decades of use, particularly in schools. This option is practical for use on high-level windows and louvres.

## Practicality of Manual Gear

- Extremely strong and robust
- Suitable for large and heavy sashes
- High wind resistance
- Can be powder coated to match joinery colour
- No extra costs for wiring or electrical work



## Design Requirements of Manual Gear

- Maximum number of sashes is 8 (if sashes <850mm wide).
- Maximum horizontal shaft length 7000mm and vertical riser height 5400mm.
- Sashes must be top hung or on *frictionless* stays.
- Restrictor stays must not be fitted to sashes.
- Not suitable for windows at head height, as the gearing protrudes into the room when closed.

## Operations of Manual Gear

- The windows are operated by a vertical shaft and a gearbox with a handle, positioned at an easy to reach height.
- No cabling/wiring is required.
- Gearboxes, vertical drive mechanisms and shaft support must be mounted on solid walls adjacent to windows. i.e. installation requires a solid fixing point for these components.



# Electric Shaft and Lever Gearing

The electric shaft and lever system is a smart choice for situations where convenience, quiet operation, and minimal effort are priorities. It is especially useful when window sashes are positioned high or are difficult to access. This system uses a 230v electric linear actuator motor, providing smooth and reliable movement with the press of a switch. OWT use European motors, engineered in Italy and known for their quality, performance, and cost effectiveness in automated window control.

## Practicality of Electric Gear

- Quiet and efficient - fast operation with minimal noise
- Discreet design - compact components that make it less noticeable than manual shaft & lever
- Versatile Installation - suitable for a wide range of building types and interior layouts
- Reliable and Economical - especially for multiple sash configurations, this is a quality solution that offers long term value



## Design Requirements of Electric Gear

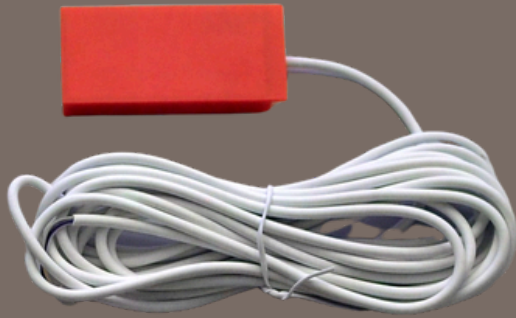
- Standard Voltage - operates on standard 230v mains power, so no special wiring or control units are required for basic operation.
- Motor Finish - motors feature a natural anodised aluminium body with black plastic fittings, offering a clean and durable finish.
- Mounting Requirements - electric linear actuators must be mounted to solid walls to ensure proper function and long-term stability
- Installation Procedure - during installation OWT sets up the motors and adjusts the limit switches. Cabling is left accessible for final connection by an electrician. Note: Motors are not to be permanently hard-wired.
- Electrical Supply - all electrical wiring is to be supplied and installed by a licensed electrician.
- Switch Requirements - control switches must include a neutral (return-to-centre or hold-to-open/hold-to-close) position, ensuring that power is only supplied to the motors while actively operating. This prevents continuous voltage supply to the actuators.
- Wiring Configuration - electric linear actuators can be wired in parallel for simultaneous operation.



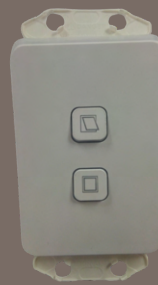
🔍 Electric Chain Drives



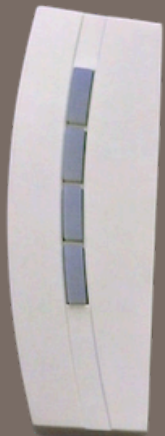
# General Accessories for Chain Drives



Rain Sensor



Switch



Remote

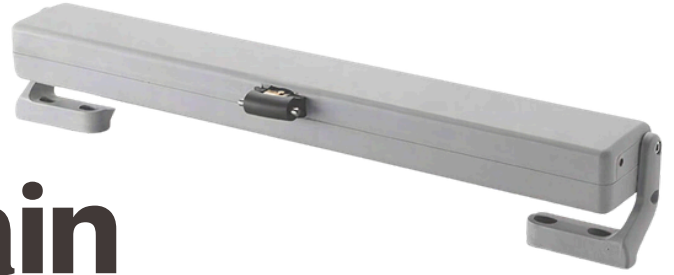


Drop-down Transformer



Controller

# TOPP C20 Electric Chain Drives



Italian-designed and manufactured, the TOPP C20 chain drive is a robust and reliable solution for window automation. Widely used across Europe and Australasia, these units are available in both 230v and 24v versions to suit a range of applications.

OWT has extensive experience installing chain drives in diverse environments, including schools, churches, community centres, and residential buildings - even where blinds or curtains are to be used.

The C20 is designed to suit modern window hardware, providing automation for a wide variety of window types and sizes.

We also offer integration with a full range of smart control options, including:

- Rain, wind, smoke and temperature sensors
- Remote control systems
- Fully integrated automation via Building Management Systems (BMS)

## Why Choose the TOPP C20?

- Slim and Discreet Design - blends seamlessly with window frames and does not interfere with curtains or blinds.
- Space-Saving - extremely compact, ideal for both new builds and retrofits.
- Reliable and Safe - built to European standards for consistent, long-term performance.
- Cost-Effective - offers excellent value for a high-quality automated solution.



# TOPP C20

## Technical Specifications

The TOPP C20 is a high-performance electric actuator featuring a double-link articulated chain, housed in a compact and durable casing. Designed for seamless integration with both top-hung and bottom-hung window systems, it comes complete with all necessary mounting brackets and accessories.

- **Power supply:** 230v AC, 50Hz or 24v DC (optional)
- **Maximum thrust:** 300N
- **Adjustable stroke:** selectable between 240mm and 360mm via an external selector
- **Quick-connect system:** for fast and easy installation to window frames
- **Certifications:** CE marked for compliance with European standards

Ideal for automated natural ventilation and building management systems, the TOPP C20 ensures reliable operation and a sleek, unobtrusive design.

| Model                        | C20 230v                                | C20 24v                                 |
|------------------------------|---|---|
| Power Supply                 | 230v AC, 50Hz                           | 21-21v DC                               |
| Maximum Thrust Force         | 300N                                    | 300N                                    |
| Maximum Traction Force       | 200N                                    | 200N                                    |
| Selectable Strokes           | 240mm / 360mm                           | 240mm / 360mm                           |
| Current Draw                 | 0.12A                                   | 0.43A                                   |
| Idle Translation Speed       | 8mm/s                                   | 7.5mm/s                                 |
| Idle Stroke Duration         | 46s                                     | 48s                                     |
| Double Electrical Insulation | Yes                                     | Yes                                     |
| Service Type                 | S2, 4 minutes                           | S2, 4 minutes                           |
| Operating Temperature        | -5°C to +50°C                           | -5°C to +50°C                           |
| Protection Rating            | IP30                                    | IP30                                    |
| Window Mounting Adjustment   | Not Required                            | Not Required                            |
| Parallel Connection          | Supported                               | Supported                               |
| Stroke End Detection         | Electronic (open), amperometric (close) | Electronic (open), amperometric (close) |
| Dimensions (LxHxD)           | 362mm x 48mm x 34mm                     | 362mm x 48mm x 34mm                     |
| Weight*                      | 0.970kg                                 | 0.940kg                                 |

\* The weight may vary according to the chosen accessories.

# ACK4 Electric Chain Drives



Designed and manufactured in Italy, the ACK4 chain drive is a proven, high-quality actuator used extensively across Europe and Australasia. Known for its robust build, safety, and reliability, it has been widely installed in schools and commercial buildings - even where curtains or blinds are present, as it doesn't interfere with window treatments.

The ACK4 is available in 230v, allowing for simple and cost effective wiring - no transformers or control boxes are required for basic operation. This makes it an economical choice, particularly for single-sash windows. Parallel wiring is supported, and a 24v version is also available if preferred.

We also offer a full range of compatible automation options, including rain, smoke and temperature sensors, as well as remote controls and fully integrated control systems.

## Key Benefits of the ACK4

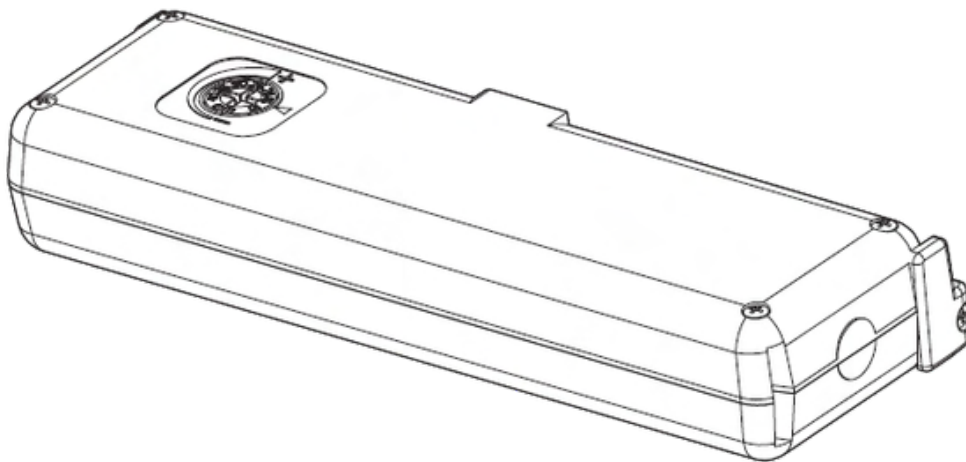
- Discreet and compact - perfect for smaller width sashes, blends seamlessly into window frames
- Fast and powerful - suitable for sashes up to 1500mm wide
- Highly durable - designed for long-term performance
- IP55 rated - protected against dust and water
- More economical than manual gearboxes for single sash windows
- 230v direct wiring - no need for transformers or controllers with basic operation
- Motor length makes it suitable for narrow width sashes



# ACK4

## Technical Data

| Code             | ACK4230              | ACK424               |
|------------------|----------------------|----------------------|
| Voltage          | 230VAC               | 24VDC                |
| Stroke           | 100-400mm            | 100-400mm            |
| Thrust Force     | 300N                 | 300N                 |
| Absorbed Current | 0.32A                | 1.35A                |
| Speed            | 27mm/s               | 17mm/s               |
| Protection Class | IP55                 | IP55                 |
| Flex             | 1.5m (3 CORE)        | 1.5m (2 CORE)        |
| Colours          | White / Black / Grey | White / Black / Grey |
| Limit Stop       | Electronic           | Electronic           |
| Safety Stop      | Electronic           | Electronic           |
| Max Window Width | <1.5m                | <1.5m                |



# KATO Electric Chain Drives

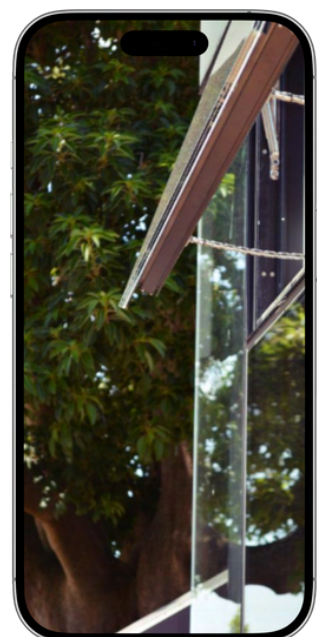


Designed and manufactured in Italy, KATO chain drives are widely used across Europe and Australasia. Renowned for their robustness and safety, these units have been installed in numerous schools, libraries and other settings - even where curtains or blinds are present, as they do not interfere with window treatments.

Operating at 230 volts, KATO chain drives feature simple cabling that eliminates the need for transformers or controllers (for basic solo and synchro operation), making installation quick and cost-effective. They can also be wired in parallel and are available in a 24-volt version if required.

## Practical Features of KATO

- Compact and discreet design - ideal for tight spaces
- Non-intrusive operation - won't interfere with curtains or blinds
- Available with stainless steel chains - perfect for coastal environments
- Direct 230v wiring - easy installation without additional transformers or controllers for basic solo and synchro operation



# KATO

## Technical Data

| Model                                    | KATO 230v   | KATO 24v  | KATO SYNCRO <sub>3</sub> 230v                       | KATO SYNCRO <sub>3</sub> 24v                        |
|--|---|---|---|---|
| Force exerted by thrust and traction     | 300N  | 300N  | 300N  | 300N  |
| Strokes (can be selected at any time)    | 110, 200, 300, 400mm                                | 110, 200, 300, 400mm                                | 100, 200, 400mm                                     | 100, 200, 400mm                                     |
| Power supply voltage                     | 110/230v~   | 24v   | 110/230v~   | 24v   |
| Rated absorbed current                   | 0.115A  | 0.950A  | 0.115A  | 0.950A  |
| Power absorbed at nominal load           | ~25W  | ~23W  | ~25W  | ~25W  |
| No load speed                            | 12.5mm/s  | 12.5mm/s  | 8.5mm/s   | 8.5mm/s   |
| Duration of no load stroke (400mm)       | 32s   | 32s   | 48s   | 48s   |
| Double electrical insulation             | Yes   | Low tension   | Yes   | Low tension   |
| Type of service                          | S <sub>2</sub> of 3 minutes                         | S <sub>2</sub> of 3 minutes                         | S <sub>2</sub> of 3 minutes                         | S <sub>2</sub> of 3 minutes                         |
| Operating temperature                    | -5°C to +65°C                                       | -5°C to +65°C                                       | -5°C to +65°C                                       | -5°C to +65°C                                       |
| Protection index for electrical devices  | IP30  | IP30  | IP30  | IP30  |
| Adjustment of connection to window frame | Automatic definition of position                    | Automatic definition of position                    | Automatic definition of position                    | Automatic definition of position                    |
| Parallel powering of two or more motors  | Yes   | Yes   | Yes   | Yes   |
| Synchronised function                    | No  | No  | Yes   | Yes   |
| Static hold force                        | 1,700N  | 1,700N  | 1,700N  | 1,700N  |
| Stroke-end at opening                    | Electronic with regulation by means of dip-switches | Electronic with regulation by means of dip-switches | Electronic with regulation by means of dip-switches | Electronic with regulation by means of dip-switches |
| Stroke-end at closing                    | At absorption of power                              | At absorption of power                              | At absorption of power                              | At absorption of power                              |
| Signalling 'window open/window closed'   | No  | No  | No  | No  |
| Length of power cable                    | 2m  | 2m  | 2.5m  | 2.5m  |
| Dimensions                               | 386.5mm x 59mm x 37mm                               | 386.5mm x 59mm x 37mm                               | 386.5mm x 59mm x 37mm                               | 386.5mm x 59mm x 37mm                               |
| Weight (kg)                              | 0.970   | 0.940   | 1.180   | 1.150   |

# HM-C35C Electric Chain Drives



The OWT HM-C35C is a high performance electric chain drive designed for awning windows in residential, commercial and institutional settings. With a sleek aluminium casing that can be powder-coated to match window joinery, it's ideal for modern homes, schools, and commercial buildings - particularly where aesthetics and function matter equally.

The unit is suitable for sashes up to 1500mm wide and delivers a 300mm stroke, which can be manually shortened by removing chain links (note: this change is permanent). It features a stainless steel chain and is rated IP32, making it suitable for coastal environments.

Available in both 230v and 24v models, the HM-C35C supports parallel wiring, and the 230v version can be connected directly to a standard switch (for basic operation), without the need for transformers or controllers. It is also compatible with rain sensors, wind sensors, and remote controls.

## Key Benefits

- Sleek, modern design - powder-coatable aluminium casing blends with joinery
- Corrosion-resistant - stainless steel chain, ideal for coastal use
- Simple installation - 230v model connects directly to switch (no controller needed)
- Automation-ready - supports rain/wind sensors and remote control
- Parallel wiring capable - for operation across multiple windows
- Stroke: 300mm (manually reducible) - suitable for sashes 500mm wide and above
- IP32 protection rating - suitable for coastal environments
- Recommended for residential, school, and commercial use



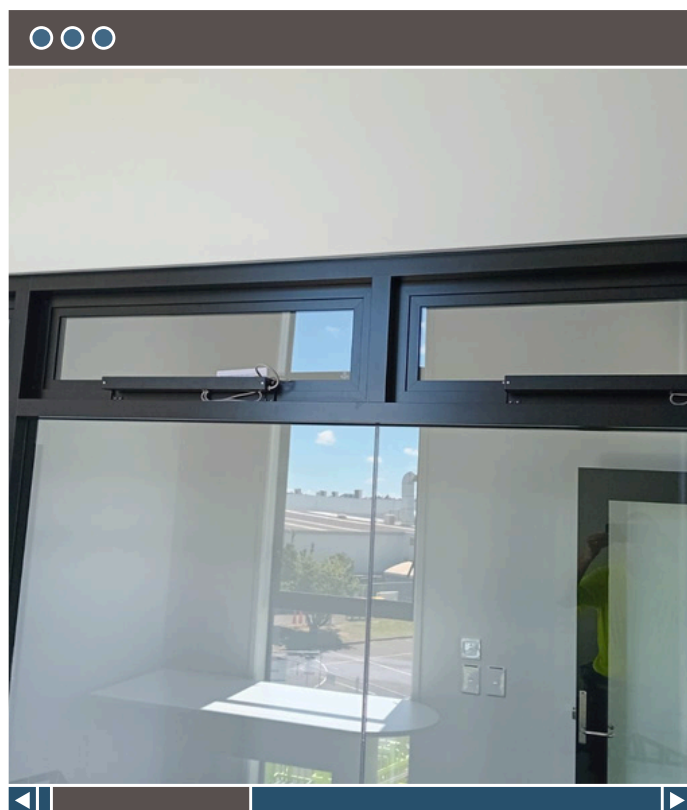
# HM-C35C

## Technical Data

| Technical Characteristics                     | HM-C35C/230V        | HM-C35C/24V         |
|---|---------------------|---------------------|
| Power Supply Voltage                          | 230V/240V AC        | 24V DC              |
| Traction Force                                | 300N                | 300N                |
| Stroke Length                                 | 300mm               | 300mm               |
| Opening Speed (No Load)                       | 10mm/s              | 10mm/s              |
| Maximum Operating Current                     | 0.2A                | 1.0A                |
| Material of Chain                             | Stainless Steel     | Stainless Steel     |
| Casing Material                               | Aluminium           | Aluminium           |
| Double Electric Insulation                    | N/A                 | N/A                 |
| Working Temperature                           | -20°C to +75°C      | -20°C to +75°C      |
| Protection Index                              | IP32                | IP32                |
| Connection of Two or More Devices in Parallel | YES                 | YES                 |
| Limit Switch Stop at Closure                  | YES                 | YES                 |
| Dimensions                                    | 510mm x 45mm x 35mm | 385mm x 45mm x 35mm |
| Weight  | 2 kg                | 2 kg                |



Double Layer Chain



# Accessories for HM-C35C

*\*(Exclusive to the OWT HM range)*



Rain Sensor



Rain & Wind  
Sensor



Remote



HC E022  
Switch

# HM-C40 Series Electric Chain Drives

## **Models: C40C (Solo Motor) / C40HD (Sync Motor)**

The OWT C40 Series is a sleek, high-performance range of electric chain drives engineered for awning windows in residential, commercial and institutional environments. With a clean, modern aluminium casing, the C40 Series offers an ideal solution where both design and performance matter.

The C40C is a solo 24v DC motor delivering 400N of thrust and a 300mm operating stroke, suitable for sashes 500mm to 1500mm wide. The C40HD sync motor setup includes two motors working in tandem, providing increased power with 600N of thrust and a 350mm stroke, making the setup ideal for larger or heavier windows. Both models operate at a consistent speed of 10mm/s and feature a stainless steel chain, ensuring long-lasting durability in a wide range of climates.

With an IP32 protection rating, the C40 Series is suitable for coastal installations. Stroke length can be permanently reduced by manually removing chain links. Compatible with rain and wind sensors, these drives are automation-ready for intelligent window control.

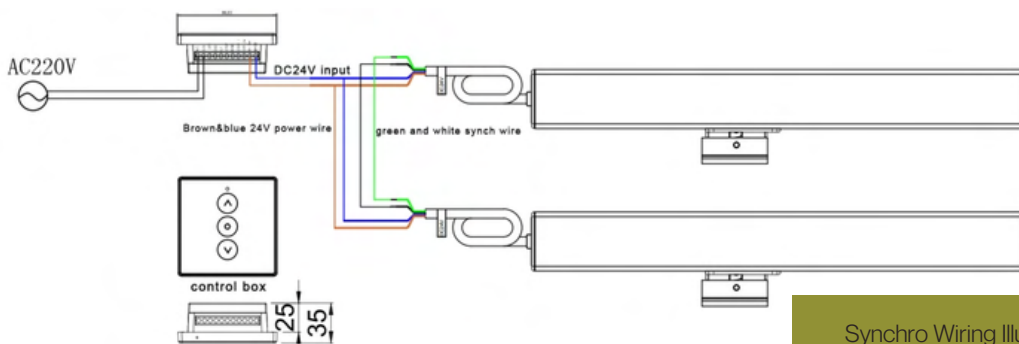
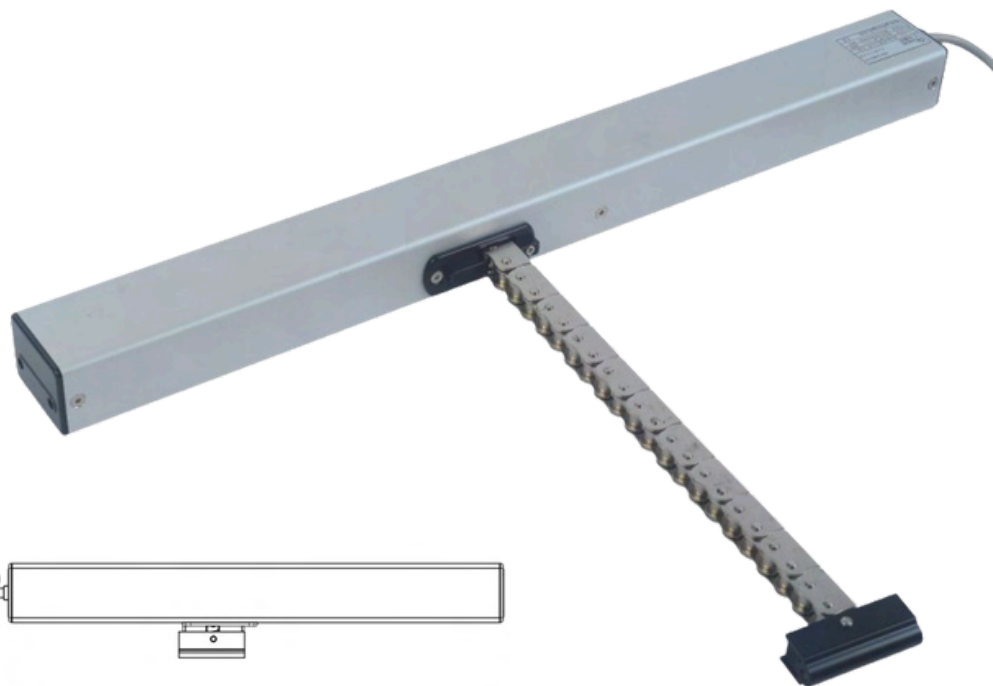
The C40C also supports parallel wiring, allowing multiple motors to open and close simultaneously. The C40HD is a synchronised unit with built-in sync wiring for precise dual-motor operation.

## **Key Benefits**

- Modern, low profile design - powder-coatable aluminium casing blends seamlessly with joinery
- Weather-resistant - stainless steel chain with IP32 rating, ideal for coastal use
- Automation ready - supports integration with rain and wind sensors
- Flexible installation - C40C solo motor supports parallel wiring without a controller (for basic operation)
- Powerful performance - 400N (C40C) and 600N (C40HD) for a range of sash sizes
- Manually adjustable stroke - 300mm (C40C) and 600N (C40HD), reducible by chain link removal
- Safe and reliable - low voltage (24v DC) operation
- Recommended for residential, school, and commercial use
- Can be provided with a controller that combines switch, drop-down transformer and periferal sensors (e.g. rain) as 1 unit

# HM-C40 Series Technical Data

| Technical Characteristics                     | HM-C40C/24V         | HM-C40HD/24V        |
|---|---------------------|---------------------|
| Power Supply Voltage                          | 24V DC              | 24V DC              |
| Traction Force                                | 400N                | 600N                |
| Stroke Length                                 | 300mm               | 350mm               |
| Opening Speed (No Load)                       | 10mm/s              | 10mm/s              |
| Maximum Operating Current                     | 1.0A                | 1.3A                |
| Material of Chain                             | Stainless Steel     | Stainless Steel     |
| Casing Material                               | Aluminium           | Aluminium           |
| Double Electric Insulation                    | N/A                 | N/A                 |
| Working Temperature                           | -20°C to +75°C      | -20°C to +75°C      |
| Protection Index                              | IP32                | IP32                |
| Connection of Two or More Devices in Parallel | YES                 | YES                 |
| Limit Switch Stop at Closure                  | YES                 | YES                 |
| Dimensions                                    | 406mm x 51mm x 40mm | 406mm x 51mm x 40mm |
| Weight  | 2 kg                | 2 kg                |
| Sync Operation                                | NO                  | YES                 |



Synchro Wiring Illustration

# Accessories for HM-C40 Series

*\*(Exclusive to the HM range)*



Rain Sensor



Rain & Wind  
Sensor



Remote



HC E022  
Switch

# Liwin L35 & L40 Electric Chain Drives



## Powerful performance in a slim, modern design

The Liwin L35 (Slim) & L40 Series offers compact, high-efficiency chain drive actuators designed for intelligent window automation across residential, commercial, and institutional settings. Whether you're automating top-hung, bottom-hung, or roof windows, the Liwin range delivers sleek aesthetics, reliable power, and smart-control - all in an ultra-slim profile ideal for confined spaces.

Available in 24v and 230v models, with options for standard or built-in Wi-Fi control, the L35 and L40 Series can operate sashes up to 1500mm wide in solo mode - or synchronised for larger openings. Precision millimetric stroke adjustment (with a control unit), soft start/stop, and built-in obstacle detection ensure smooth and safe operation every time.

Compatible with a wide range of window types and wiring configurations (including parallel wiring for grouped control), the L35 and L40 Series is a smart, scalable solution for projects of any size. The Wi-Fi models also offer configuration via the MOWIN app, allowing full control over stroke length, speed, and multi-motor sync - all without hardwiring.

## Key Benefits

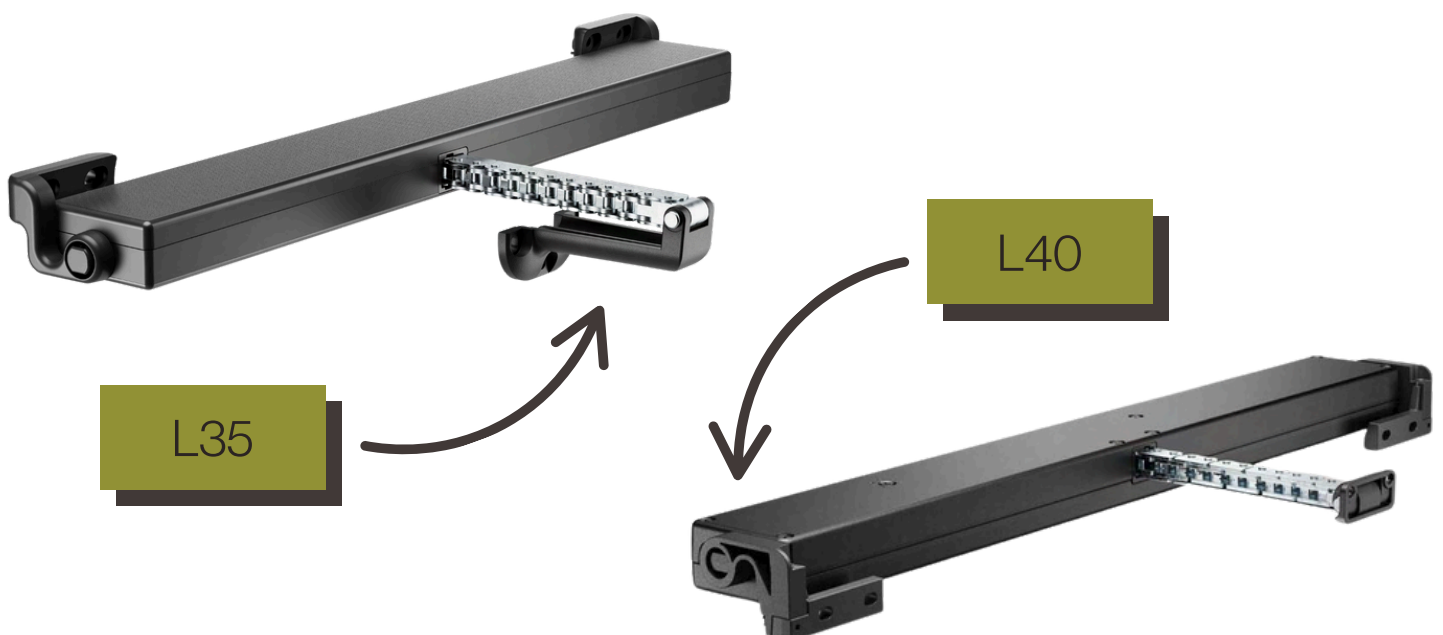
- An unobtrusive chain drive - ideal for slimline windows
- Powerful thrust - 350N push/pull force for reliable sealing and performance
- Flexible voltage options - available in both 24v DC and 230v AC models
- Wi-Fi enabled versions - configure settings and sync actuators via the MOWIN app
- One Smart app control to allow local environment control (external temperature, wind, sun), and open/close time control
- Smart control - millimetric stroke adjustment, soft start/stop, and obstacle detection
- Synchronised operation - sync actuators for larger or heavier windows (Wi-Fi models)
- Parallel wiring - operate multiple units from a single switch (up to 30 actuators)
- Durable and safe - stainless steel chain (L40), 1500N static retention force
- Coastal ready - L40 models with corrosion-resistant materials for harsh environments
- Available in grey, white or black
- Universal compatibility - suitable for awning, bottom-hung, and roof windows

Whether you're designing for modern living or specifying for public spaces, the Liwin L35 & L40 Series offers a streamlined, future-ready solution for intelligent window automation.

# Liwin L35 & L40

## Technical Data

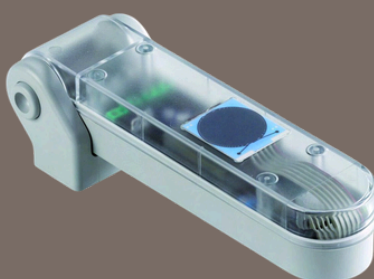
| Specification               | L35 & L40 Series  |
|-----------------------------|---|
| Voltage Options             | 24V DC or 110/230V AC   |
| Control                     | Wired or Wi-Fi (app configurable)   |
| Push / Pull Force           | 350N in L35, 400N in L40  |
| Chain Type                  | Galvanized steel double-link chain (Stainless steel in L40)   |
| Stroke Length               | Selectable stroke lengths to a max of 400mm for L35, 500mm for L40 (Wi-Fi models: millimetric adjustment via app) |
| Window Types                | Top-hung, bottom-hung, roof windows   |
| Max Sash Width (Solo Motor) | Up to 1500mm  |
| Sync Operation              | Wi-Fi models support synchronisation (up to 8 actuators)  |
| Soft Start / Stop           | Yes   |
| Parallel Wiring             | Yes - up to 30 actuators  |
| Obstacle Detection          | Yes - current absorption-based  |
| IP Rating                   | IP30 for L35, IP44 for L40  |
| Operating Temperature       | -5°C + 50°C   |
| Casing Dimensions           | 27 x 54 x 440 mm for L35, 30 x 58 x 498 mm for L40  |
| Available Colours           | Black, White and Grey   |
| Weight                      | 1.11kg for L35, 1.85kg for L40  |
| App Control                 | Available on Wi-Fi models (via MOWIN app)   |



# Accessories for Liwin L35 & L40



AF 960  
Control Unit



Rain Sensor



AF 870  
Switch



AF 850  
Controller



Sun Wind  
Sensor



AF 890  
Controller

# Yale Aeron® Electric Chain Drives



The Yale Aeron® is a compact, high-tech electric chain actuator designed for residential awning and casement windows - especially those that are hard to reach. Whether you're managing airflow, automating ventilation, or securing your home remotely, Aeron brings seamless convenience and safety with sleek, unobtrusive design.

With control via the Yale Home app or remote, users can group windows by room or function (e.g. "Kitchen", or "Living") and open or close them all with a single touch. Wide sashes over 900mm require tandem motors, which are easily configured with a sync loom for smooth, unified movement and a secure seal when closed.

The Aeron system is scalable and fully customisable - just choose your power supply, add a Connect Plus Hub to enable app/remote functionality, and select your preferred control method (remote or smart device).

## Key Benefits

- Sleek, compact design - discreet profile, ideal for modern homes
- Smart control - works with Yale Home app and remote control (when paired with hub)
- Group operation - assign windows to zones for simplified multi-window control
- Wider windows - use tandem motors for sashes over 900mm (sync loom required)
- Reliable build - 304 stainless steel chain, designed for timber or aluminium joinery
- Quiet, smooth movement - ~40 second full stroke operation
- Shorter length body also allows it to fit narrow sashes



# Yale Aeron®

## Technical Data

| Technical Characteristics     | Yale Aeron 24v DC  |
|-------------------------------|--|
| Voltage                       | 24V DC   |
| Max Current Draw              | 0.6A (600mA) / 15W   |
| Operating Force               | 90N (suitable for sashes requiring up to 18kg push force)      |
| Stroke                        | 275mm (variable)   |
| Opening/Closing Time          | Approx. 40 seconds   |
| Environment                   | 0-50°C, up to 95% humidity                                     |
| Chain                         | Stainless Steel (Grade 304)                                    |
| Mounting                      | Sill-fixing standard; transom-fixing requires optional bracket |
| Max Sash Width (Single Motor) | Up to 900mm  |
| Sashes Over 900mm             | Require 2x actuators + Sync loom                               |
| Sync Operation                | YES  |

### System Components Required (sold separately)

- **Power Supply** (24v DC)
- **Connect Plus Hub 2** (for app or remote control)
- **Remote Control** (if not using app)
- **Sync Loom** (for tandem/sync operation of 2 motors on wider sash windows)

### Recommended For:

- Smart homes
- Multi-storey dwellings
- Apartments and units
- High or hard-to-reach windows



# AXA Remote 2.0™ Battery-Operated Chain Winder

The AXA Remote 2.0™ brings modern convenience to traditional window operation, allowing you to open and close hard-to-reach windows at the push of a button - without the need for wiring, transformers, or external power.

Perfect for residential applications and public spaces alike, the AXA Remote 2.0 is ideal for awning, bottom-hung, or roof windows where accessibility or safety is a concern. Control one or multiple windows using a single remote, or choose a wall-mounted switch (no wiring required).

With wireless operation, strong sealing power, and built-in safety features like anti-finger-clamping and auto-stop on obstruction, the AXA Remote 2.0 delivers comfort, compliance, and peace of mind in a compact and stylish design.

## Key Benefits

- Wireless and battery-powered - no mains wiring required
- Remote controlled - operate windows up to 6m away with infra-red remote
- Supports grouped control - possibility to operate several windows with a single remote control
- Optional wall switch - ideal for permanent locations or public areas
- Child-safe & obstruction detection - anti-finger clamping safety feature
- Security rated - SKG certified and compliant with Police Hallmark for Safe Living
- High sealing force - closes window with minimum 400N pulling force
- Low battery indicator - system returns window to closed position automatically
- Colour-matched finishes - available in white, grey or aluline (silver finish)
- Simple DIY-friendly install - comes with drill template and screws
- Complies with Dutch Building Decree ventilation standards (NEN 1087 & 8087)



# AXA Remote 2.0™

## Technical Data

| Technical Characteristics  | AXA Remote 2.0   |
|----------------------------|--|
| Power                      | Battery operated (no wiring required)  |
| Control                    | Infra-red remote (range ~6m)   |
| Max Opening Stroke         | 130mm  |
| Recommended Max Sash Width | 1000mm   |
| Force                      | Pulling force 400N, Pushing force 150N   |
| Window Suitability         | Timber or aluminium windows with butt or hook hinges (non-friction stays only) |
| Window Types               | Awning, bottom-hung, casement, roof windows                                    |
| Colours Available          | White / Grey / Aluline   |
| Battery Life               | Multi-year with low battery warning  |
| Warranty                   | 2 year replacement warranty  |
| Chain                      | Galvanized Steel   |

### Special Option

- Wall-Mounted Switch - Option for fixed installation or where IR remotes are impractical (e.g. classrooms or shared spaces).

### Recommended For:

Smart homes · Elderly or mobility-impaired users · Multi-storey dwellings · Any windows that are hard to reach or inconvenient to open manually



White

Grey

Aluline



# Accessories for AXA Remote 2.0™

As this is a battery operated actuator, the general accessories are not available. For this winder, there are two options: either a remote or a wall-mounted switch to operate.



Remote



Wall-mounted  
Switch





**Operable Window Technologies**  
2 / 3 Tironui Station Road West,  
Takanini, Auckland 2112  
T: +64 9 580 3100 M: +64 21 221 1525  
[owntnz.com](http://owntnz.com)